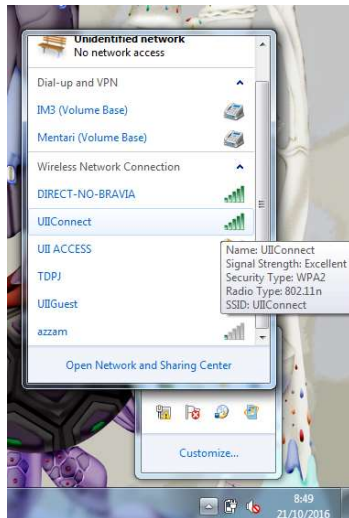


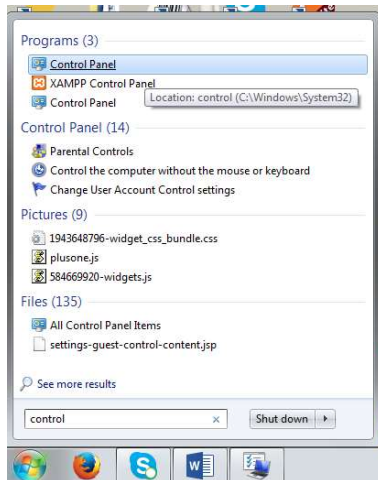
Panduan Login ke UII-Connect

A. Windows 7

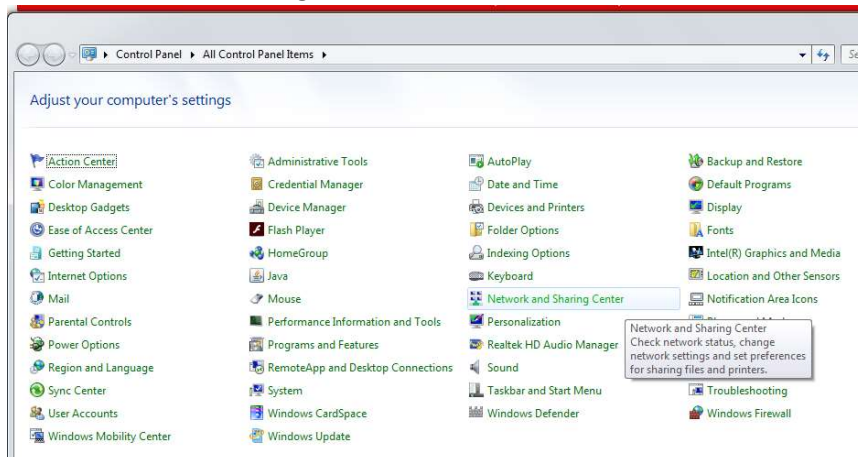
1. Pastikan signal UIIConnect ada diarea yang anda gunakan



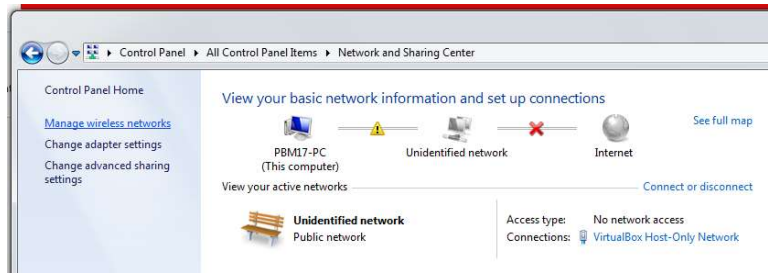
2. Buka Control panel



3. Klik Network And Sharing Center



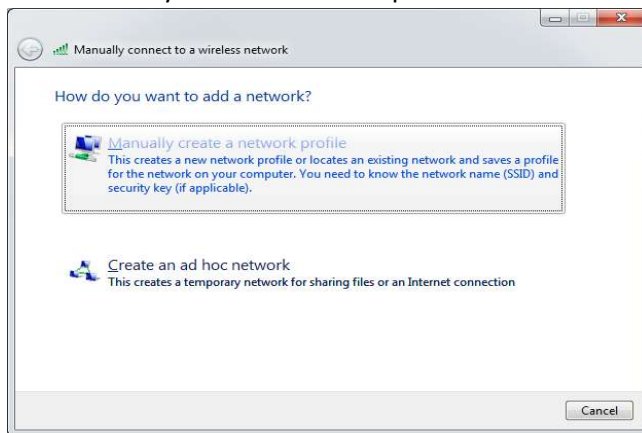
4. Klik menu Manage Wireless Network



5. Klik tombol Add



6. Pilih Manually create a network profile

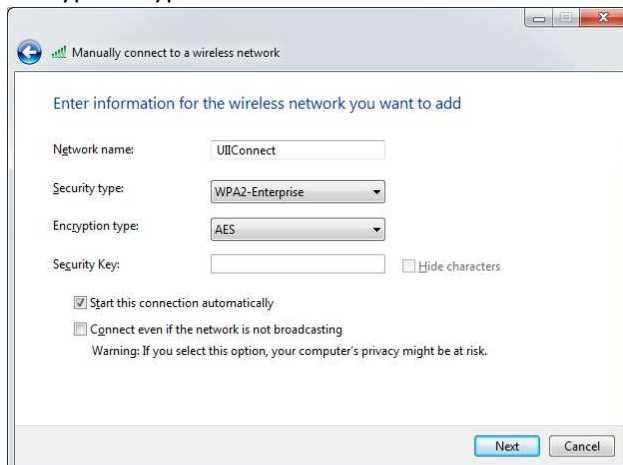


7. Atur konfigurasi sebagaimana berikut

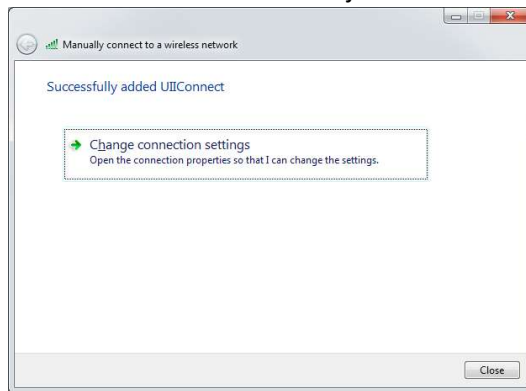
Network name : **UIIConnect**

Security type: **WPA2-Enterprise**

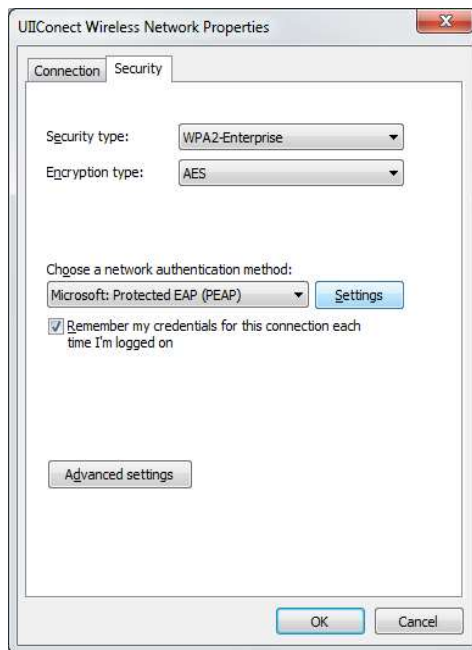
Encryption type: **AES**



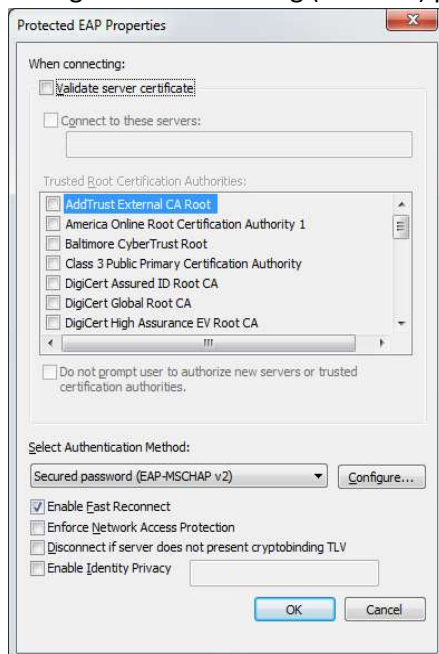
8. Setelah itu klik Next dan lanjutkan klik **Change connection setting**



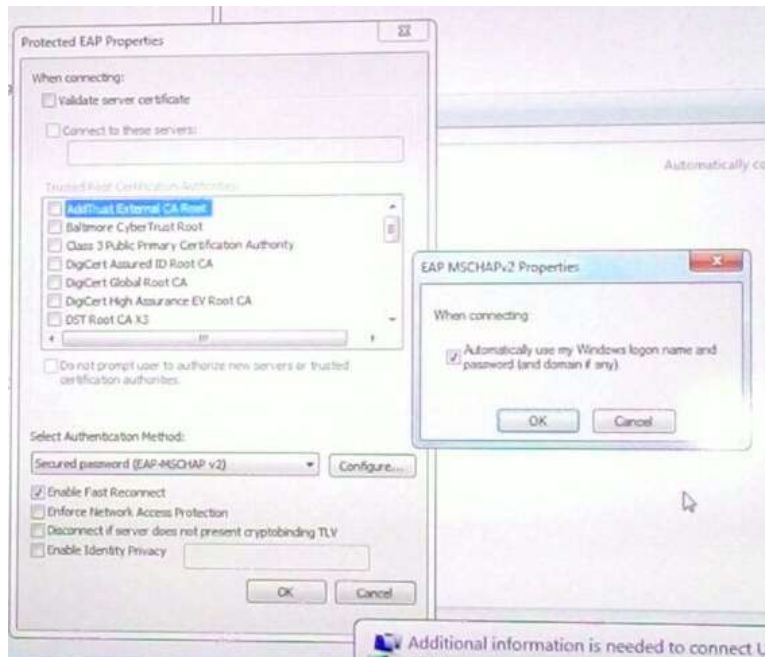
9. Pada tab security , klik tombol **Settings** pada bagian **Choose a network authentication method**.



10. Hilangkan tanda centang (uncheck) pada bagian **Validate server certificate**



11. Di bagian **Select authentication method (EAP-MSCHAP V2)** klik configure pastikan di uncheck pada **Automatically use my windows logon name and password (and domain if any)**

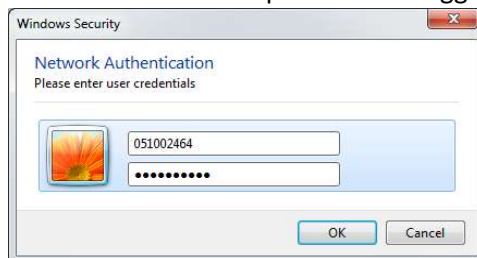


Jika masih gagal, pada checkbox **enable Fast Reconnect** dicoba untuk diuncheck

12. Klik OK sampai kembali ke tampilan awal. Lakukan proses koneksi ke akses wifi UIIconnect yang sudah dibuat.

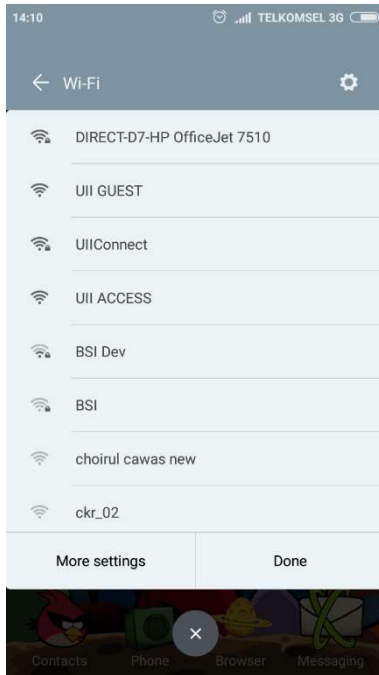


13. Masukan user ID dan password menggunakan account Unisys anda.

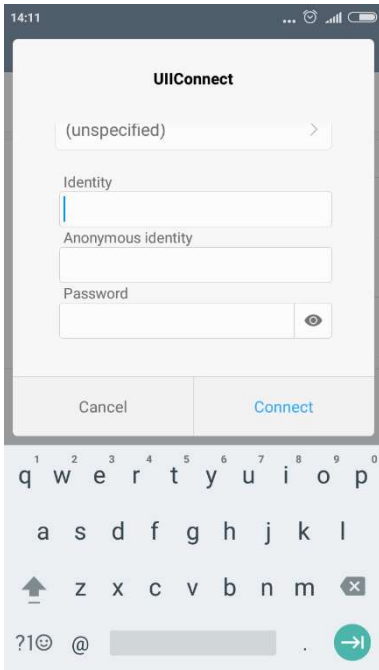


B. Android

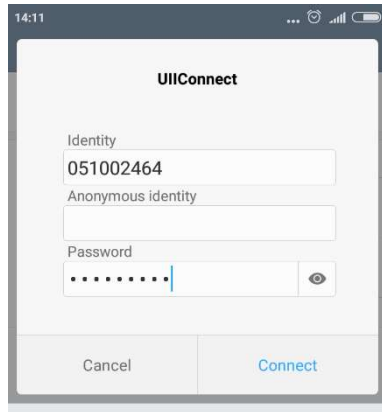
1. Aktifkan WIFI



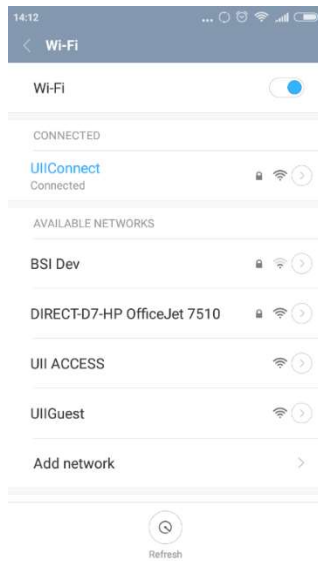
2. Dari list WIFI yang terdeteksi, pilih UIIConnect



3. Masukkan username pada kolom **Identity** dan **password** menggunakan account Unisys anda.

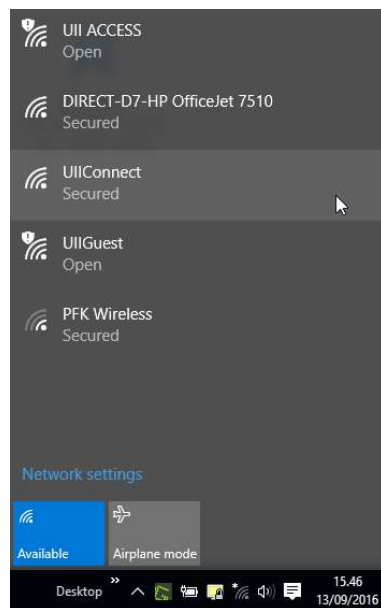


4. Jika benar maka status koneksi UIIConnect akan Connected

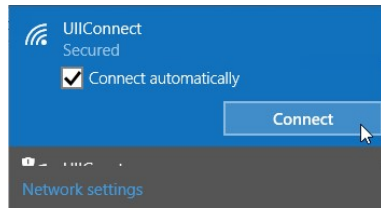


C. Windows 10

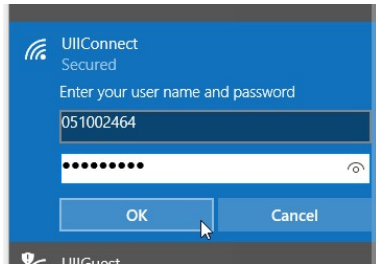
1. Aktifkan WIFI, Pilih UIIConnect



2. Klik tombol Connect



3. Masukkan username dan password



4. Pastikan sampai status UIIConnect menjadi Connected, Secured

